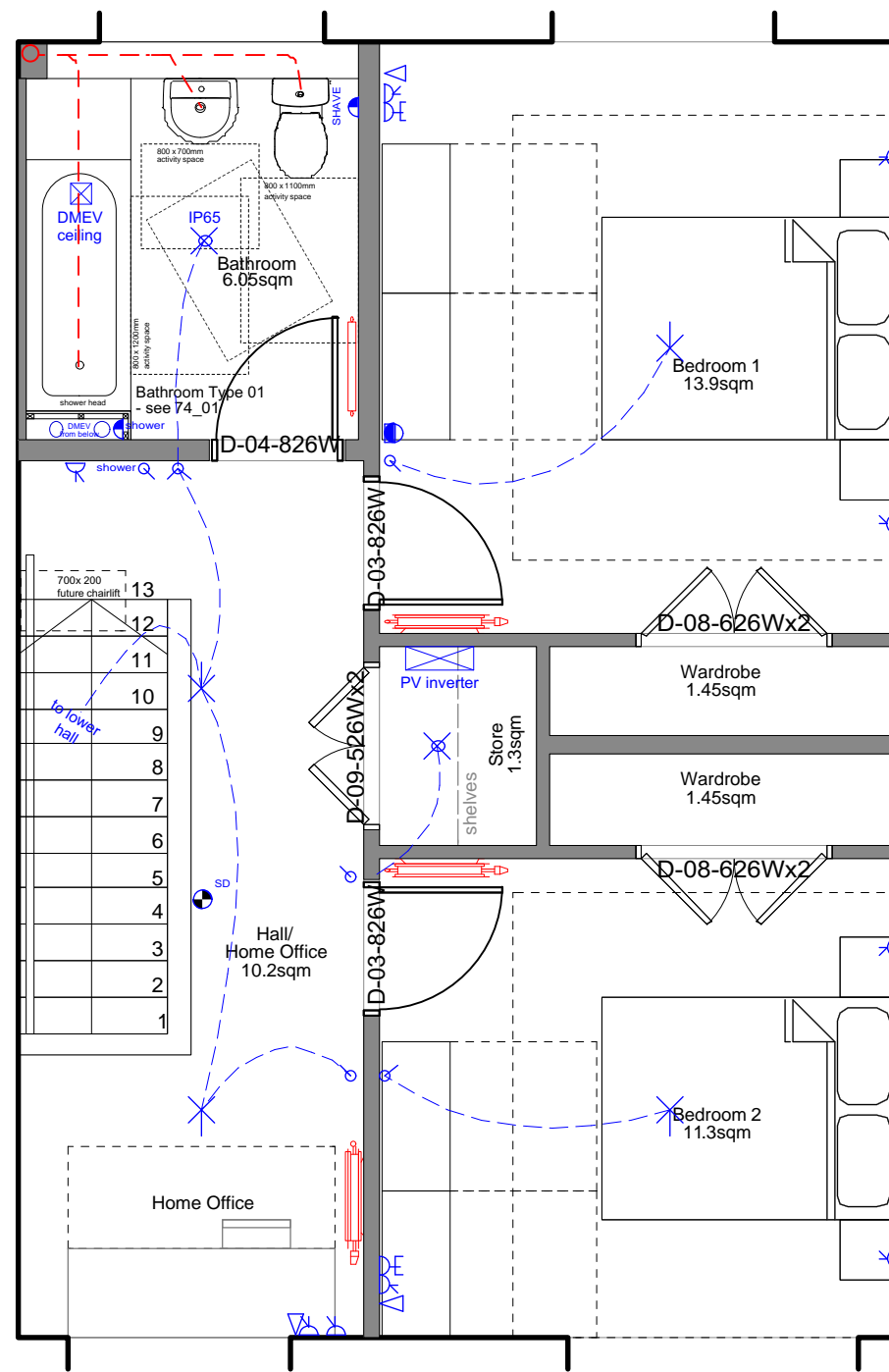


Ground Floor Plan



First Floor Plan

ELECTRICAL LEGEND	
	Light - 1 gang 1 way switch
	Light - 2 gang 2 way switch
	Light - Pendant fitting
	Light - Bulkhead fitting
	wall mounted light
	low voltage lights
	Consumer unit
	Socket - 2 gang low level socket
	Socket - T.V. aerial socket
	low voltage light and shaver point
	Socket - Telephone
	Spur - Shower hotwater
	shower switch
	Spur - Future alarm location
	Thermostat
	Doorbell - Sounder unit at HL
	Doorbell - Push at 1m height
	Detector - Carbon Monoxide
	Detector - Heat
	Detector - Mains operated smoke detector with battery back up
	Detector - Carbon Dioxide Wall mounted with 24hr memory and monitor display
	cooker control switch
	high level oven control switch
	boiler control switch
	low level fused spur
	2 gang high level socket
	extract fans spur
	high level tumble dryer control switch
	high level washing machine control switch
	high level dish washer control switch
	high level fridge control switch
	concealed kitchen unit lights

REV	REVISION NOTE	DATE	BY
H	Revised for Construction Issue.	04/02/2020	RA
G	For Billing issue No.2	06/06/19	RA
F	Revised Block Plan following DTM, reduce floor area by 4m2.	15/04/19	RA
E	Revised following Tender	03/04/19	RA
D	Revised for Warrant Issue.	11/12/18	RA
C	Issued for planning	14/09/18	DK
B	Revised following client comments pre-cost plan.	20/08/18	RA
A	Revised layout prior to community consultation event.	02/07/18	RA

KEY -
CONSTRUCTION ISSUE

NOTES -

DO NOT SCALE FROM DRAWING

ALL DIMENSIONS TO BE CHECKED ON SITE PRIOR TO THE START OF ANY WORK AND ANY DISCREPANCIES NOTIFIED IN WRITING.

REFER TO ENGINEERS' DRAWINGS FOR ALL STRUCTURAL, HEATING, LIGHTING, POWER, EXTERNAL AND UNDERGROUND DRAINAGE AND VENTILATION INFORMATION

ALL BUILDING WORKS TO COMPLY IN ALL RESPECTS TO CURRENT BUILDING STANDARDS FOR COUNTRY IN WHICH SITE IS LOCATED.

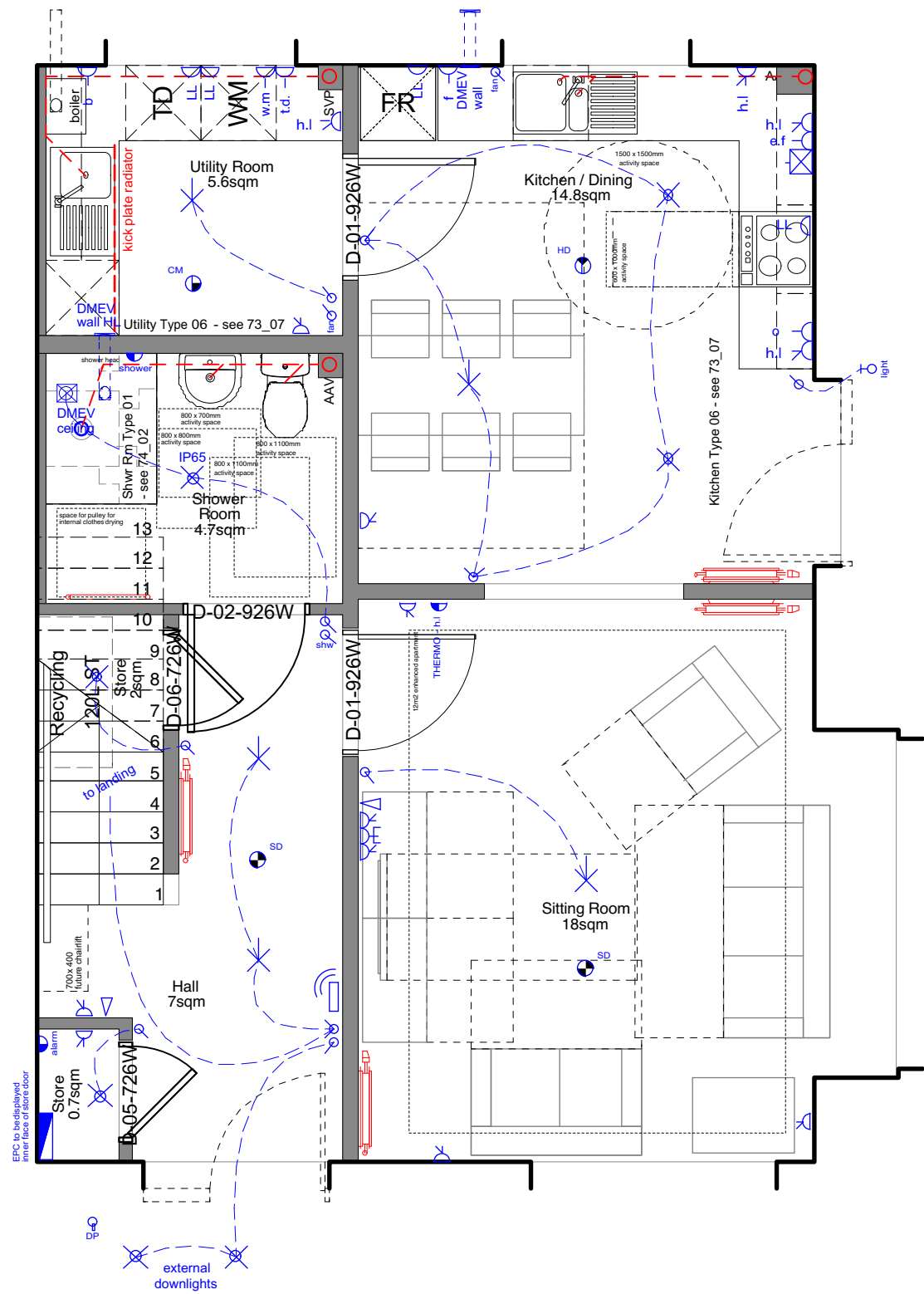
CLIENT - Cunninghame Housing Association		
PROJECT - Lockerbie		
DRAWING - TYPE 01 - 2b 4p House		
DATE - 07.06.18	BY - RA	SCALE - 1:50
JOB NO - 20140	CHKD - CS	DRWG NO - TYP_01

COLLECTIVE ARCHITECTURE

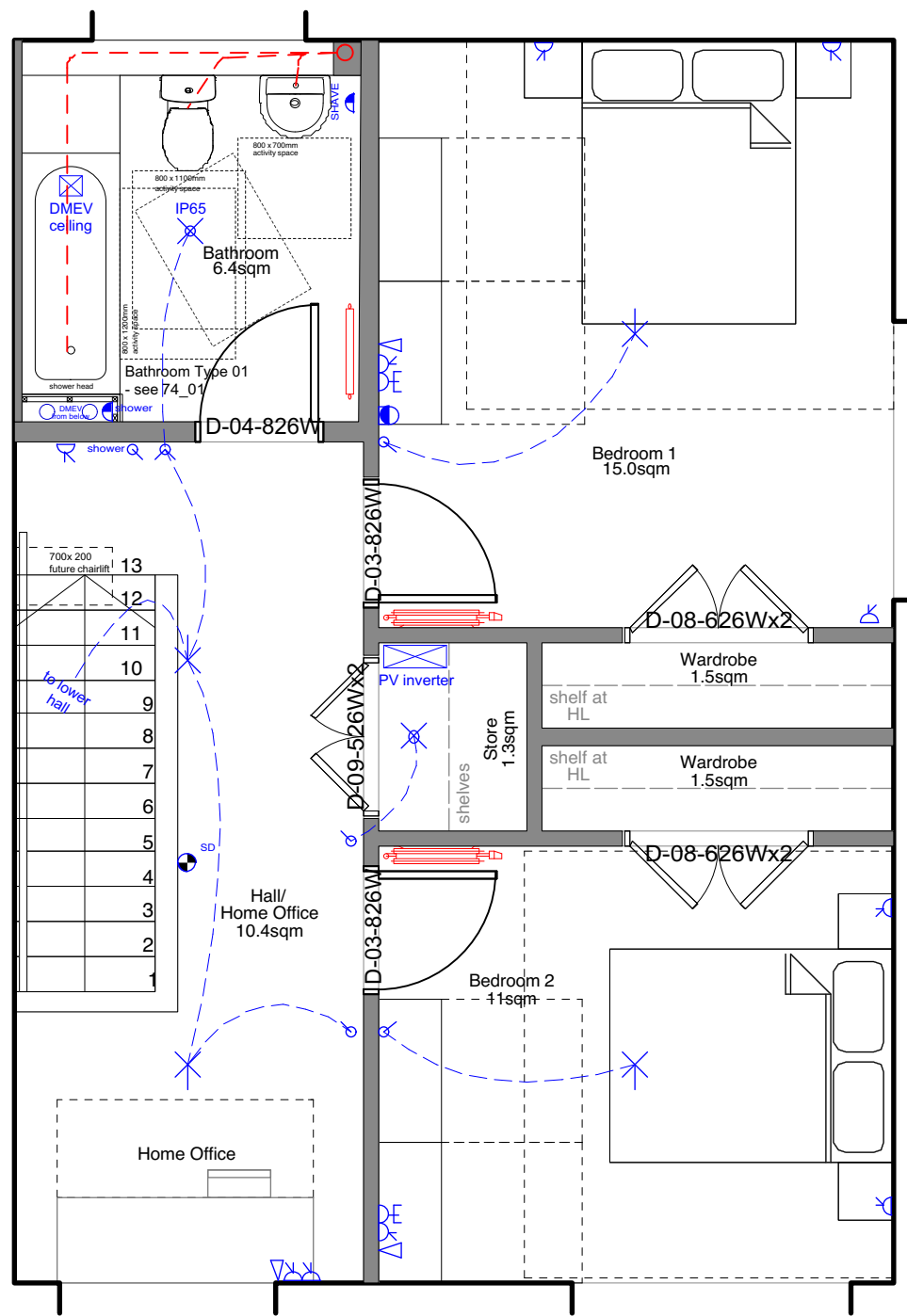
MERCAT BUILDING, 26 GALLOWGATE, GLASGOW, G1 5AB
 TELEPHONE +44(0)141 552 3001 FAX +44(0)141 552 3888

24 AINSLIE PLACE, EDINBURGH, EH3 6AJ
 TELEPHONE +44 (0)131 516 2270

EMAIL INFO@COLLECTIVEARCHITECTURE.CO.UK
WWW.COLLECTIVEARCHITECTURE.CO.UK



Ground Floor Plan



First Floor Plan

ELECTRICAL LEGEND	
	Light - 1gang 1way switch
	Light - 2gang 2way switch
	Light - Pendant fitting
	Light - Bulkhead fitting
	wall mounted light
	low voltage lights
	Consumer unit
	Socket - 2gang low level socket
	Socket - T.V aerial socket
	low voltage light and shaver point
	Socket - Telephone
	Spur - Shower hotwater
	Spur - shower switch
	Spur - Future alarm location
	Thermostat
	Doorbell - Sounder unit at HL
	Doorbell - Push at 1m height
	Detector - Carbon Monoxide
	Detector - Heat
	Detector - Mains operated smoke detector with battery back up
	Detector - Carbon Dioxide Wall mounted with 24hr memory and monitor display
	cooker control switch
	high level ovencontrol switch
	boiler control switch
	low level fused spur
	2 gang high level socket
	extract fanspur
	high level tumble dryer control switch
	high level washingmachine control switch
	high level dish washer control switch
	high level fridge control switch

REV -	REVISION NOTE -	DATE -	BY -
A	Revised for Billing Issue.	01/02/19	RA

KEY - BILLING

NOTES -

DO NOT SCALE FROM DRAWING

ALL DIMENSIONS TO BE CHECKED ON SITE PRIOR TO THE START OF ANY WORK AND ANY DISCREPANCIES NOTIFIED IN WRITING.

REFER TO ENGINEERS' DRAWINGS FOR ALL STRUCTURAL, HEATING, LIGHTING, POWER, EXTERNAL AND UNDERGROUND DRAINAGE AND VENTILATION INFORMATION

ALL BUILDING WORKS TO COMPLY IN ALL RESPECTS TO CURRENT BUILDING STANDARDS FOR COUNTRY IN WHICH SITE IS LOCATED.

DATE -	BY -	SCALE -
December 2018	RA	1:50
JOB NO -	CHKD -	DRWG NO -
20140	GD	TYP_01_Corner

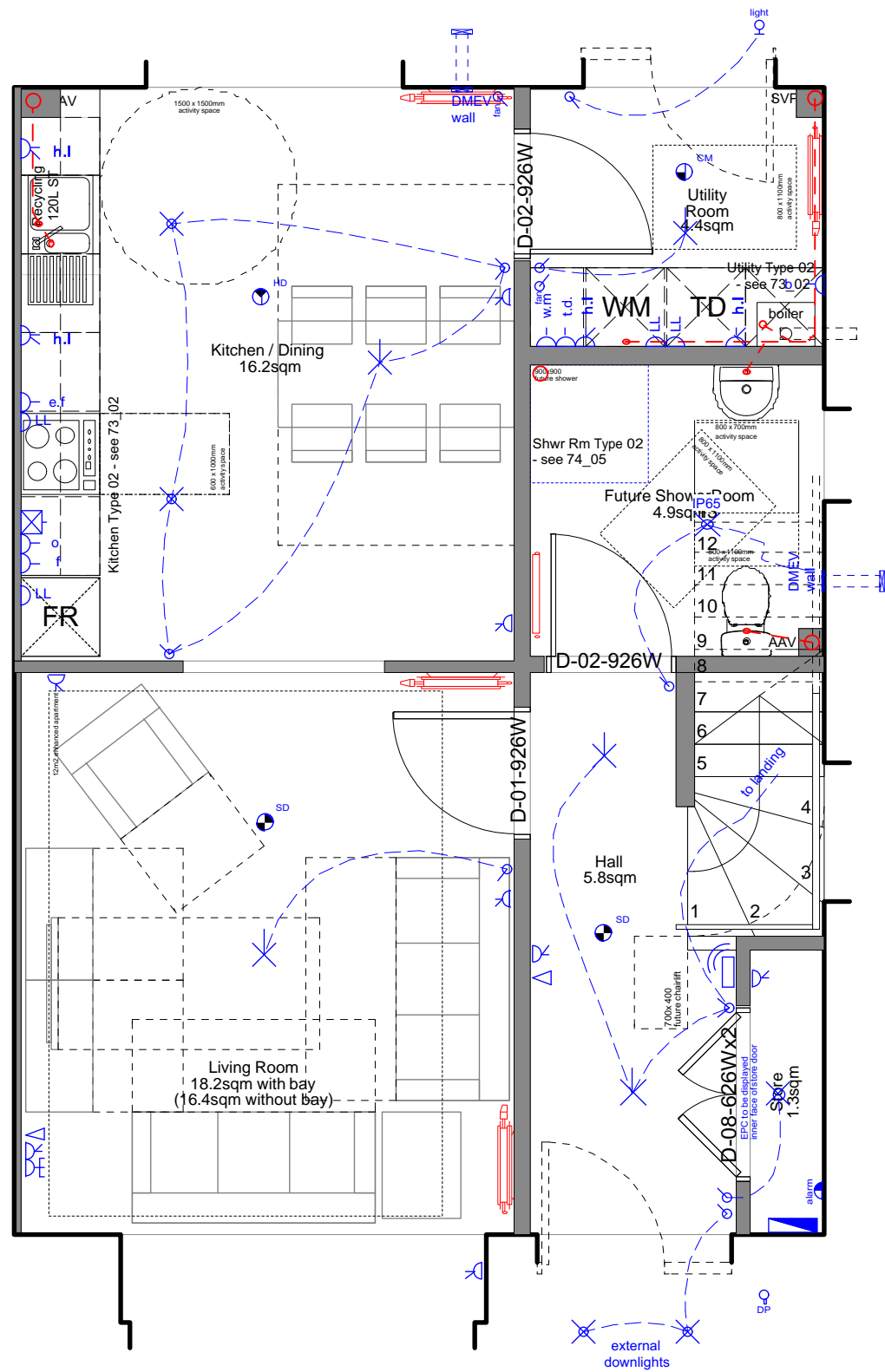
CLIENT -
Cunnigham Housing Association
PROJECT -
Lockerbie
DRAWING -
TYPE 01 Corner - 2b 4p House

COLLECTIVE ARCHITECTURE

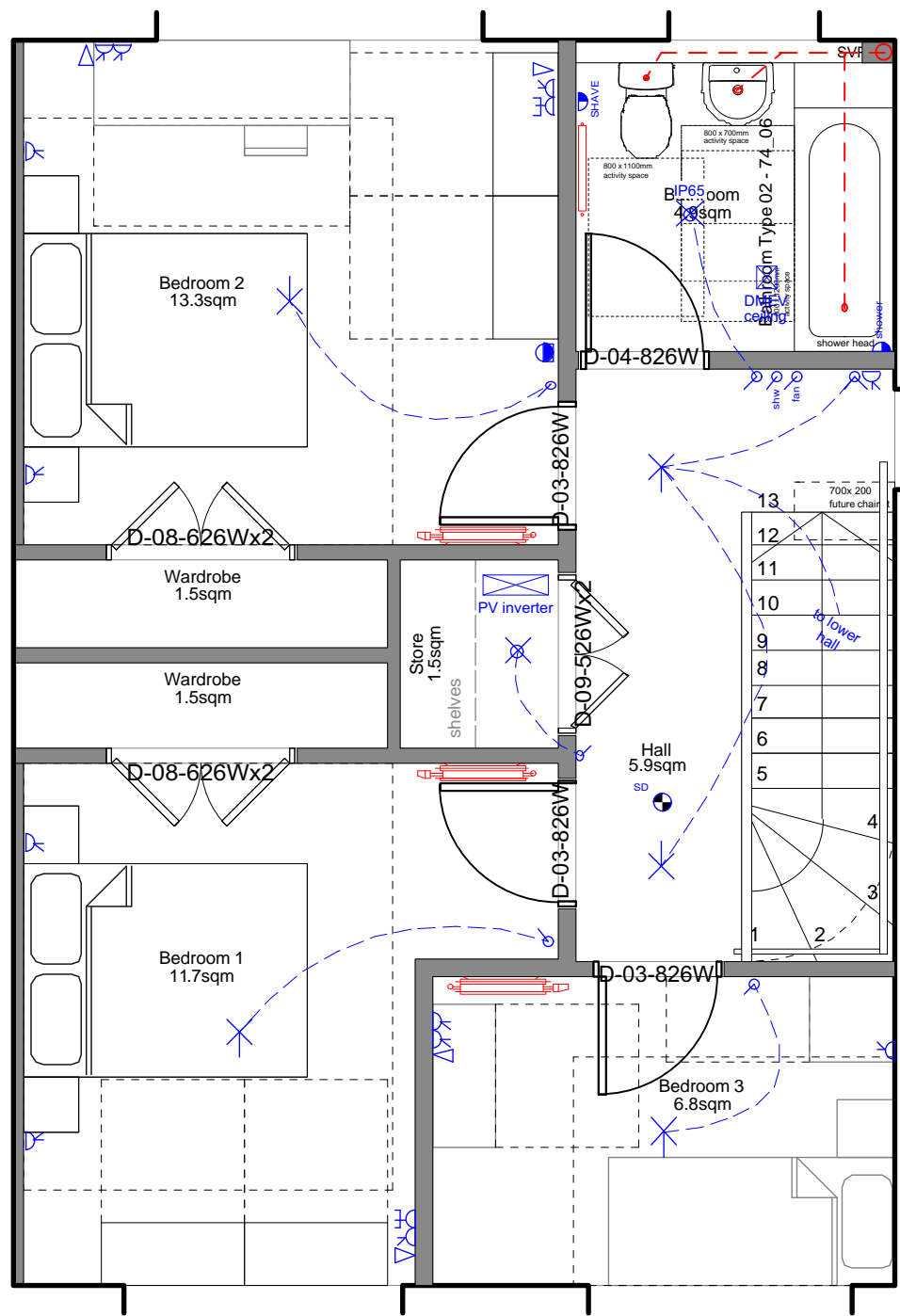
MERCAT BUILDING, 26 GALLOWGATE, GLASGOW, G1 5AB
 TELEPHONE +44(0)141 552 3001 FAX +44(0)141 552 3888

24 AINSLIE PLACE, EDINBURGH, EH3 6AJ
 TELEPHONE +44 (0)131 516 2270

EMAIL INFO@COLLECTIVEARCHITECTURE.CO.UK
WWW.COLLECTIVEARCHITECTURE.CO.UK



Ground Floor Plan



First Floor Plan

ELECTRICAL LEGEND	
	Light - 1gang 1way switch
	Light - 2gang 2way switch
	Light - Pendant fitting
	Light - Bulkhead fitting
	Light - wall mounted light
	low voltage lights
	Consumer unit
	Socket - 2gang low level socket
	Socket - T.V. aerial socket
	low voltage light and shaver point
	Socket - Telephone
	Spur - Shower hot water
	shower switch
	Spur - Future alarm location
	Thermostat
	Doorbell - Sounder unit at HL
	Doorbell - Push at 1m height
	Detector - Carbon Monoxide
	Detector - Heat
	Detector - Mains operated smoke detector with battery back up
	Detector - Carbon Dioxide
	Wall mounted with 24hr memory and monitor display
	cooker control switch
	high level oven control switch
	boiler control switch
	low level fused spur
	2 gang high level socket
	extract fans spur
	high level tumble dryer control switch
	high level washing machine control switch
	high level dish washer control switch
	high level fridge control switch

REV -	REVISION NOTE -	DATE -	BY -
G	Revised for Construction Issue.	04/02/2020	RA
F	For Billing issue No.2	06/06/19	RA
E	Revised to reduce floor area by 8m2 following tender appraisal.	22/03/19	RA
D	Revised for Warrant Issue.	11/12/18	RA
C	Issued for planning	14/09/18	DK
B	Revised following client comments pre-cost plan.	20/08/18	RA
A	Revised layout prior to community consultation event.	02/07/18	RA

KEY -

CONSTRUCTION ISSUE

NOTES -

DO NOT SCALE FROM DRAWING

ALL DIMENSIONS TO BE CHECKED ON SITE PRIOR TO THE START OF ANY WORK AND ANY DISCREPANCIES NOTIFIED IN WRITING.

REFER TO ENGINEERS' DRAWINGS FOR ALL STRUCTURAL, HEATING, LIGHTING, POWER, EXTERNAL AND UNDERGROUND DRAINAGE AND VENTILATION INFORMATION

ALL BUILDING WORKS TO COMPLY IN ALL RESPECTS TO CURRENT BUILDING STANDARDS FOR COUNTRY IN WHICH SITE IS LOCATED.

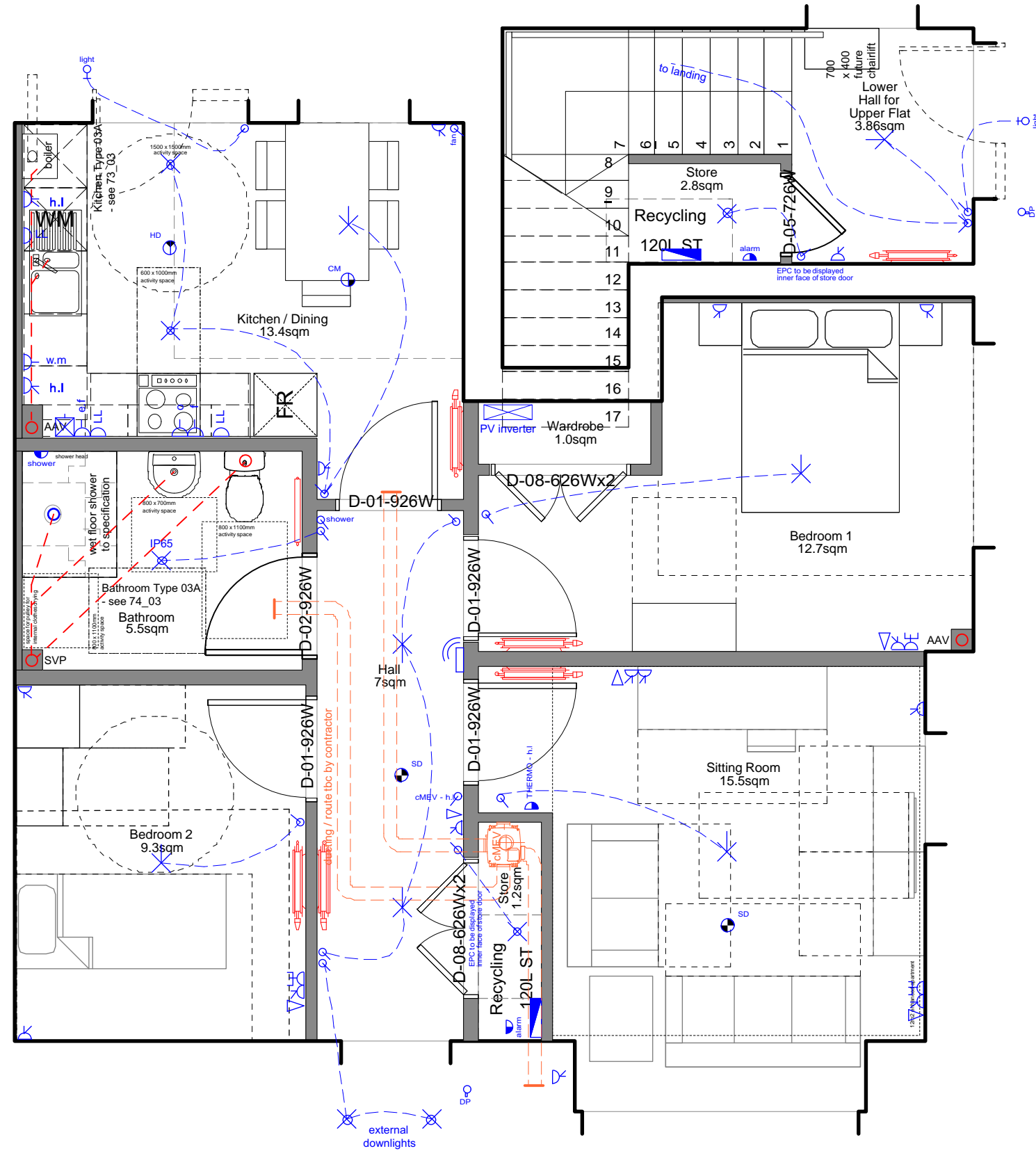
CLIENT - Cunninghame Housing Association		
PROJECT - Lockerbie		
DRAWING - TYPE 02 - 3b 5p House		
DATE - 23.05.18	BY - RA	SCALE - 1:50
JOB NO - 20140	CHKD - CS	DRWG NO - TYP_02

COLLECTIVE ARCHITECTURE

MERCAT BUILDING, 26 GALLOWGATE, GLASGOW, G1 5AB
TELEPHONE +44(0)141 552 3001 FAX +44(0)141 552 3888

24 AINSLIE PLACE, EDINBURGH, EH3 6AJ
TELEPHONE +44 (0)131 516 2270

EMAIL INFO@COLLECTIVEARCHITECTURE.CO.UK
WWW.COLLECTIVEARCHITECTURE.CO.UK

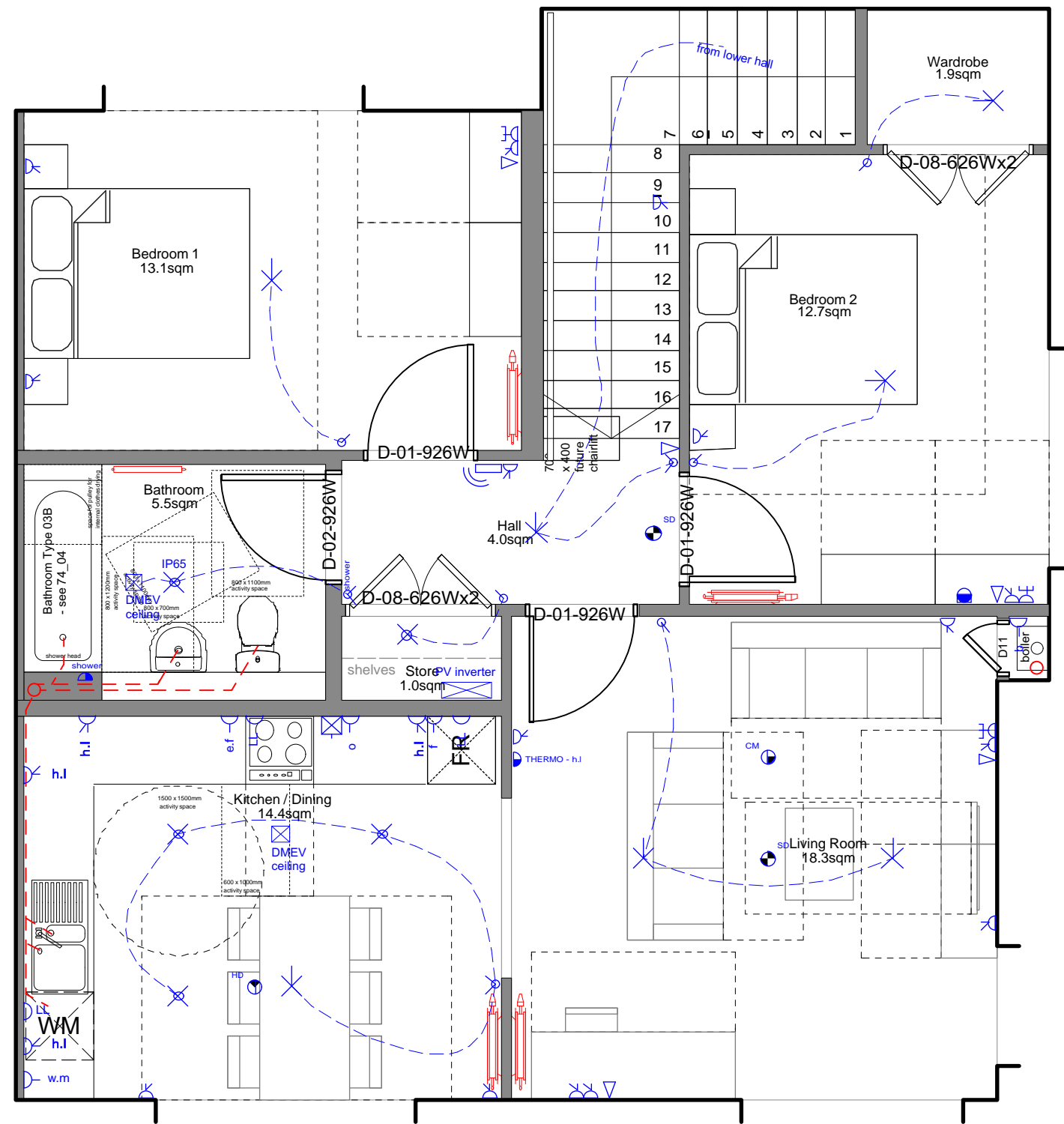


ELECTRICAL LEGEND

	Light - 1 gang 1 way switch		Doorbell - Sounder unit at HL
	Light - 2 gang 2 way switch		Doorbell - Push at 1m height
	Light - Pendant fitting		Detector - Carbon Monoxide
	Light - Bulkhead fitting		Detector - Heat
	wall mounted light		Detector - Mains operated smoke detector with battery back up
	low voltage lights		Detector - Carbon Dioxide
	Consumer unit		Wall mounted with 24hr memory and monitor display
	Socket - 2 gang low level socket		cooker control switch
	Socket - T.V. aerial socket		high level oven control switch
	low voltage light and shaver point		boiler control switch
	Socket - Telephone		low level fused spur
	Spur - Shower hot water		2 gang high level socket
	Spur - Future alarm location		extract fanspur
	Thermostat		high level tumble dryer control switch
			high level washing machine control switch
			high level dish washer control switch
			high level fridge control switch
			concealed kitchen unit lights

Ground Floor Plan

<p>KEY -</p> <h2>CONSTRUCTION ISSUE</h2>		<p>NOTES -</p> <p>DO NOT SCALE FROM DRAWING</p> <p>ALL DIMENSIONS TO BE CHECKED ON SITE PRIOR TO THE START OF ANY WORK AND ANY DISCREPANCIES NOTIFIED IN WRITING.</p> <p>REFER TO ENGINEERS' DRAWINGS FOR ALL STRUCTURAL, HEATING, LIGHTING, POWER, EXTERNAL AND UNDERGROUND DRAINAGE AND VENTILATION INFORMATION</p> <p>ALL BUILDING WORKS TO COMPLY IN ALL RESPECTS TO CURRENT BUILDING STANDARDS FOR COUNTRY IN WHICH SITE IS LOCATED.</p>		<p>CLIENT -</p> <p>Cunnigham Housing Association</p> <p>PROJECT -</p> <p>Lockerbie</p> <p>DRAWING -</p> <p>TYPE 3A - 2b 3p Cottage Flat</p>		<p>COLLECTIVE ARCHITECTURE</p> <p>MERCAT BUILDING, 26 GALLOWGATE, GLASGOW, G1 5AB TELEPHONE +44(0)141 552 3001 FAX +44(0)141 552 3888</p> <p>24 AINSLIE PLACE, EDINBURGH, EH3 6AJ TELEPHONE +44 (0)131 516 2270</p> <p>EMAIL INFO@COLLECTIVEARCHITECTURE.CO.UK WWW.COLLECTIVEARCHITECTURE.CO.UK</p>
<p>G</p> <p>F</p> <p>E</p> <p>D</p> <p>C</p> <p>B</p> <p>A</p>	<p>Revised for Construction Issue. For Billing issue No.2</p> <p>Revised following Tender Appraisal.</p> <p>Revised for Warrant Issue.</p> <p>Issued for planning.</p> <p>Revised following client comments pre-cost plan.</p> <p>Revised layout prior to community consultation event.</p>	<p>04/02/2020</p> <p>06/06/19</p> <p>25/03/19</p> <p>11/12/18</p> <p>14/09/18</p> <p>20/08/18</p> <p>02/07/18</p>	<p>RA</p> <p>RA</p> <p>RA</p> <p>RA</p> <p>DK</p> <p>RA</p> <p>RA</p>	<p>DATE -</p> <p>BY -</p>	<p>DATE -</p> <p>BY -</p> <p>SCALE -</p> <p>23.05.18</p> <p>RA</p> <p>1:50</p>	
<p>REV -</p>	<p>REVISION NOTE -</p>	<p>DATE -</p>	<p>BY -</p>	<p>DATE -</p>	<p>BY -</p> <p>SCALE -</p>	
				<p>20140</p>	<p>CS</p> <p>TYP_03A</p>	
					<p>JOB NO -</p> <p>20140</p>	



ELECTRICAL LEGEND	
	Light - 1 gang 1 way switch
	Light - 2 gang 2 way switch
	Light - Pendant fitting
	Light - Bulkhead fitting
	low voltage lights
	Consumer unit
	Socket - 2 gang low level socket
	Socket - T.V aerial socket
	low voltage light and shaver point
	Socket - Telephone
	Spur - Shower hotwater
	Spur - shower switch
	Spur - Future alarm location
	Thermostat
	Doorbell - Sounder unit at HL
	Doorbell - Push at 1m height
	Detector - Carbon Monoxide
	Detector - Heat
	Detector - Mains operated smoke detector with battery back up
	Detector - Carbon Dioxide Wall mounted with 24hr memory and monitor display
	cooker control switch
	high level oven control switch boiler control switch
	low level fused spur
	2 gang high level socket
	extract fan spur
	high level tumble dryer control switch
	high level washing machine control switch
	high level dish washer control switch
	high level fridge control switch
	concealed kitchen unit lights

First Floor Plan

REV -	REVISION NOTE -	DATE -	BY -
G	Revised for Construction Issue.	04/02/2020	RA
F	For Billing issue No.2	06/06/19	RA
E	Revised to reduce floor area by following tender appraisal.	25/03/19	RA
D	Revised for Warrant Issue.	11/12/18	RA
C	Issued for planning	14/09/18	DK
B	Revised following client comments pre-cost plan.	20/08/18	RA
A	Revised layout prior to community consultation event.	02/07/18	RA

KEY -

CONSTRUCTION ISSUE

NOTES -

DO NOT SCALE FROM DRAWING

ALL DIMENSIONS TO BE CHECKED ON SITE PRIOR TO THE START OF ANY WORK AND ANY DISCREPANCIES NOTIFIED IN WRITING.

REFER TO ENGINEERS' DRAWINGS FOR ALL STRUCTURAL, HEATING, LIGHTING, POWER, EXTERNAL AND UNDERGROUND DRAINAGE AND VENTILATION INFORMATION

ALL BUILDING WORKS TO COMPLY IN ALL RESPECTS TO CURRENT BUILDING STANDARDS FOR COUNTRY IN WHICH SITE IS LOCATED.

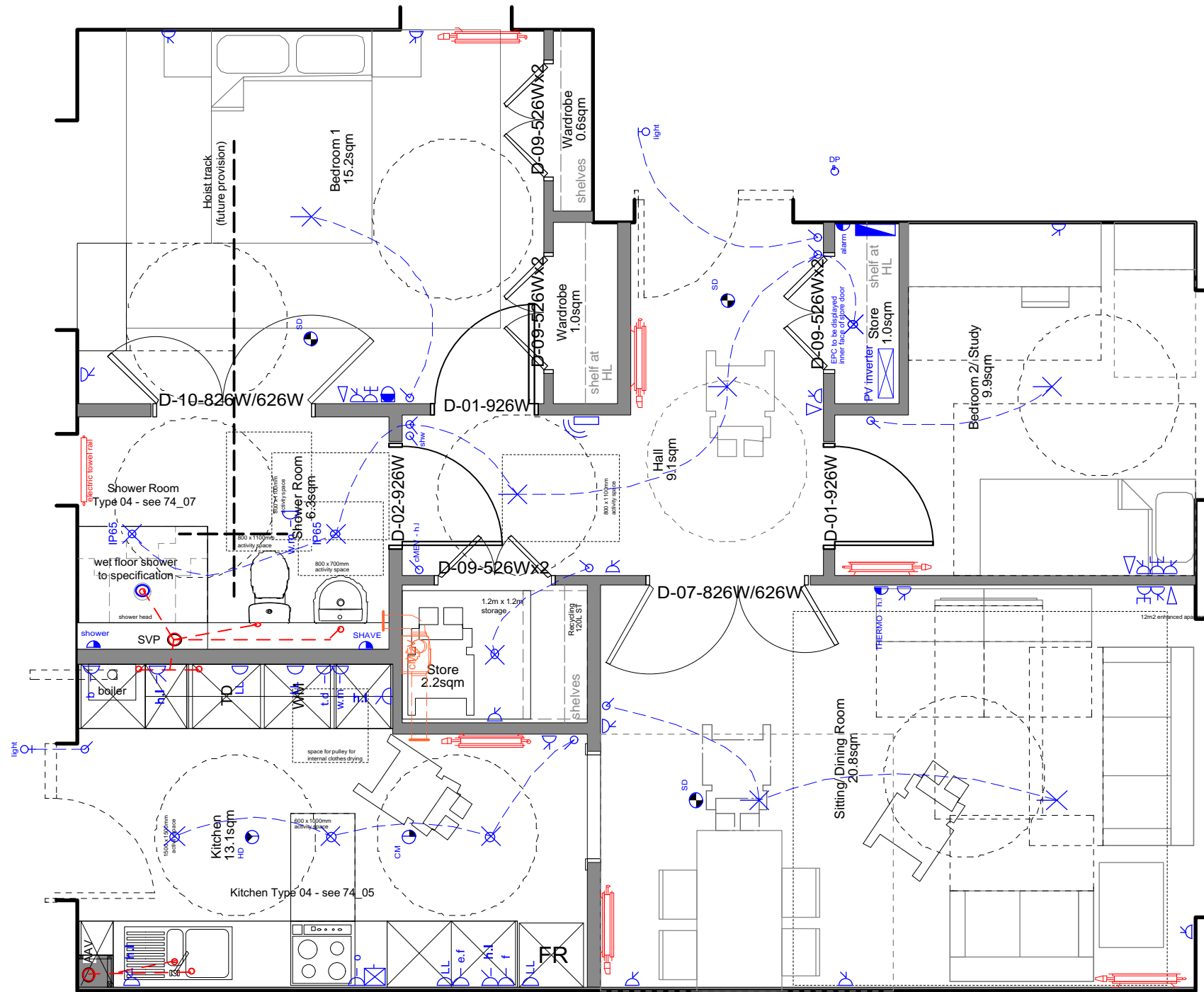
CLIENT - Cunnigham Housing Association		
PROJECT - Lockerbie		
DRAWING - TYPE 3B - 2b 4p Cottage Flat		
DATE -	BY -	SCALE -
07.06.18	RA	1:50
JOB NO -	CHKD -	DRWG NO -
20140	CS	TYP_03B

COLLECTIVE ARCHITECTURE

MERCAT BUILDING, 26 GALLOWGATE, GLASGOW, G1 5AB
TELEPHONE +44(0)141 552 3001 FAX +44(0)141 552 3888

24 AINSLIE PLACE, EDINBURGH, EH3 6AJ
TELEPHONE +44 (0)131 516 2270

EMAIL INFO@COLLECTIVEARCHITECTURE.CO.UK
WWW.COLLECTIVEARCHITECTURE.CO.UK



ELECTRICAL LEGEND			
	Light - 1gang 1way switch		Doorbell - Sounder unit at HL
	Light - 2gang 2way switch		Doorbell - Push at 1m height
	Light - Pendant fitting		Detector - Carbon Monoxide
	Light - Bulkhead fitting		Detector - Heat
	wall mounted light		Detector - Mains operated smoke detector with battery back up
	low voltage lights		Detector - Carbon Dioxide Wall mounted with 24hr memory and monitor display
	Consumer unit		cooker control switch
	Socket - 2gang low level socket		boiler control switch
	Socket - T.V. aerial socket		high level oven control switch
	low voltage light and shaver point		low level fused spur
	Socket - Telephone		2 gang high level socket
	Spur - Shower hotwater		extract fanspur
	Spur - shower switch		high level tumble dryer control switch
	Spur - Future alarm location		high level washingmachine control switch
	Thermostat		high level dishwasher control switch
			high level fridge control switch
			concealed kitchen unit lights

Ground Floor Plan

REV -	REVISION NOTE -	DATE -	BY -
I	Revised for Construction Issue.	04/02/2020	RA
H	For Billing issue No.2	06/06/19	RA
G	Revised to reduce floor area following tender appraisal.	25/03/19	RA
F	Kitchen layout revised, shower room window amended.	01/02/19	RA
E	Revised for Warrant Issue.	11/12/18	RA
D	Issued for planning.	14/09/18	DK
C	Revised following client comments pre-cost plan.	20/08/18	RA
B	Revised prior to pre-app meeting as 2b 3p type.	20/07/18	RA
A	Revised layout prior to community consultation event.	02/07/18	RA

KEY -
CONSTRUCTION ISSUE

NOTES -

DO NOT SCALE FROM DRAWING

ALL DIMENSIONS TO BE CHECKED ON SITE PRIOR TO THE START OF ANY WORK AND ANY DISCREPANCIES NOTIFIED IN WRITING.

REFER TO ENGINEERS' DRAWINGS FOR ALL STRUCTURAL, HEATING, LIGHTING, POWER, EXTERNAL AND UNDERGROUND DRAINAGE AND VENTILATION INFORMATION

ALL BUILDING WORKS TO COMPLY IN ALL RESPECTS TO CURRENT BUILDING STANDARDS FOR COUNTRY IN WHICH SITE IS LOCATED.

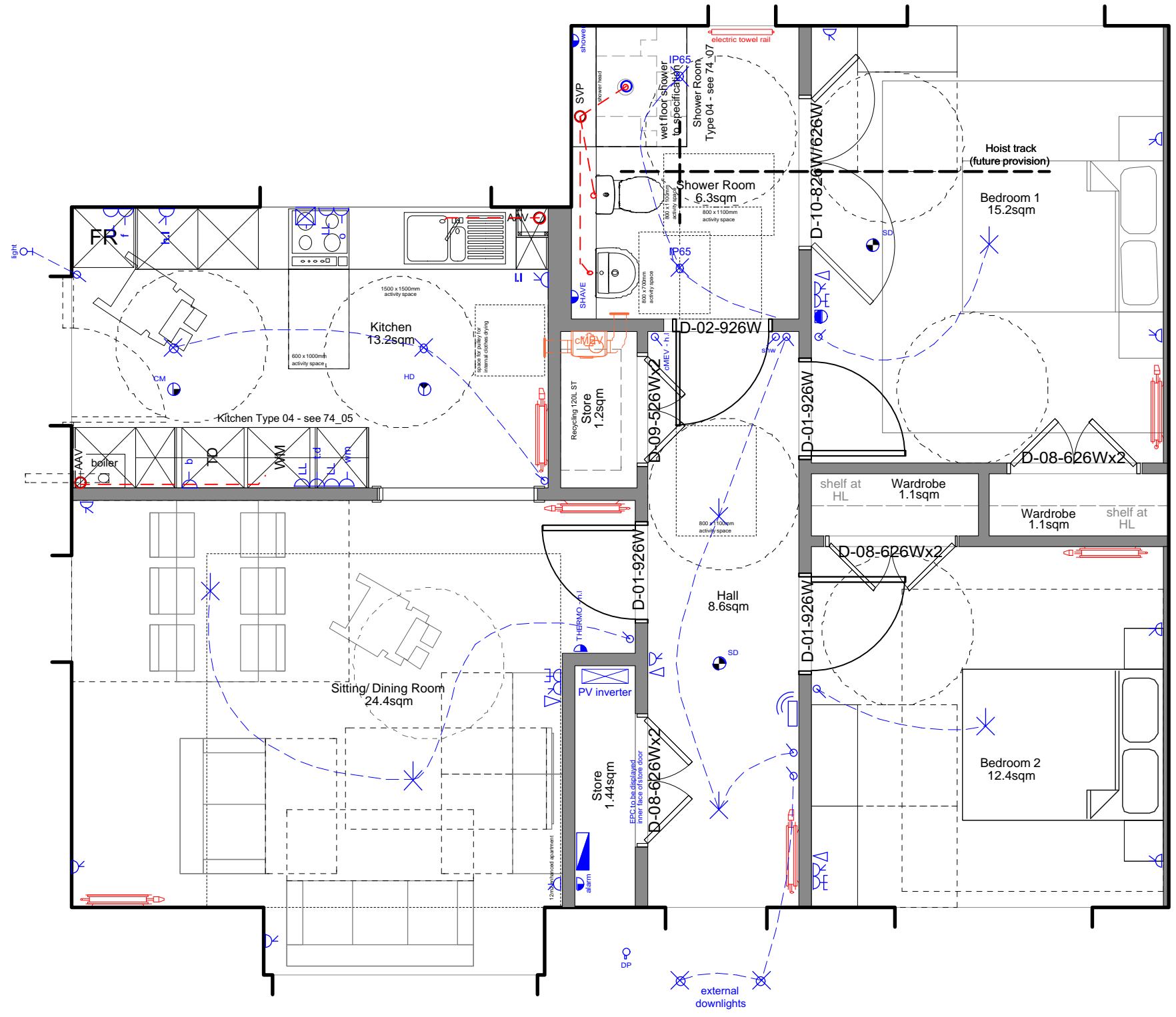
CLIENT - Cunnigham Housing Association		
PROJECT - Lockerbie		
DRAWING - TYPE 04 - 2b 3P Wheelchair Bungalow		
DATE - 07.06.18	BY - RA	SCALE - 1:50
JOB NO - 20140	CHKD - CS	DRWG NO - TYP_04

COLLECTIVE ARCHITECTURE

MERCAT BUILDING, 26 GALLOWGATE, GLASGOW, G1 5AB
 TELEPHONE +44(0)141 552 3001 FAX +44(0)141 552 3888

24 AINSLIE PLACE, EDINBURGH, EH3 6AJ
 TELEPHONE +44 (0)131 516 2270

EMAIL INFO@COLLECTIVEARCHITECTURE.CO.UK
WWW.COLLECTIVEARCHITECTURE.CO.UK



ELECTRICAL LEGEND	
	Light - 1gang 1way switch
	Light - 2gang 2way switch
	Light - Pendant fitting
	Light - Bulkhead fitting
	wall mounted light
	low voltage lights
	Consumer unit
	Socket - 2gang low level socket
	Socket - T.V. aerial socket
	low voltage light and shaver point
	Socket - Telephone
	Spur - Shower hot water
	shower switch
	Spur - Future alarm location
	Thermostat
	Doorbell - Sounder unit at HL
	Doorbell - Push at 1m height
	Detector - Carbon Monoxide
	Detector - Heat
	Detector - Mains operated smoke detector with battery back up
	Detector - Carbon Dioxide Wall mounted with 24hr memory and monitor display
	cooker control switch
	high level oven control switch
	boiler control switch
	low level fused spur
	2 gang high level socket
	extract fans spur
	high level tumble dryer control switch
	high level washing machine control switch
	high level dish washer control switch
	high level fridge control switch
	concealed kitchen unit lights

Ground Floor Plan

REV -	REVISION NOTE -	DATE -	BY -
H	Revised for Construction Issue.	04/02/2020	RA
G	For Billing issue No.2	06/06/19	RA
F	Revised to reduce floor area following tender appraisal. Kitchen rationalised as per House Type 05	25/03/19	RA
E	Kitchen layout revised, shower room window amended.	01/02/19	RA
D	Revised for Warrant Issue.	11/12/18	RA
C	Issued for planning.	14/09/18	DK
B	Shower Room Door position revised to room centre.	10/09/18	RA
A	Workstation Added. Building step added to improve distances to rear boundary.	05/09/18	AS

KEY -
CONSTRUCTION ISSUE

NOTES -

DO NOT SCALE FROM DRAWING

ALL DIMENSIONS TO BE CHECKED ON SITE PRIOR TO THE START OF ANY WORK AND ANY DISCREPANCIES NOTIFIED IN WRITING.

REFER TO ENGINEERS' DRAWINGS FOR ALL STRUCTURAL, HEATING, LIGHTING, POWER, EXTERNAL AND UNDERGROUND DRAINAGE AND VENTILATION INFORMATION

ALL BUILDING WORKS TO COMPLY IN ALL RESPECTS TO CURRENT BUILDING STANDARDS FOR COUNTRY IN WHICH SITE IS LOCATED.

CLIENT - Cunnigham Housing Association		
PROJECT - Lockerbie		
DRAWING - TYPE 05 - 2b 4p Wheelchair Bungalow		
DATE - 19.08.18	BY - RA	SCALE - 1:50
JOB NO - 20140	CHKD - CS	DRWG NO - TYP_05

COLLECTIVE ARCHITECTURE

MERCAT BUILDING, 26 GALLOWGATE, GLASGOW, G1 5AB
 TELEPHONE +44(0)141 552 3001 FAX +44(0)141 552 3888

24 AINSLIE PLACE, EDINBURGH, EH3 6AJ
 TELEPHONE +44 (0)131 516 2270

EMAIL INFO@COLLECTIVEARCHITECTURE.CO.UK
WWW.COLLECTIVEARCHITECTURE.CO.UK